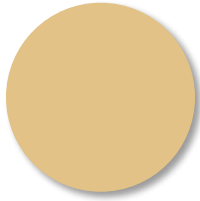


Terracoat 27 µm



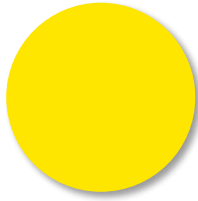
PR

RAL 1002



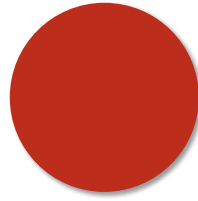
GS

RAL 1015



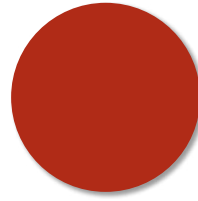
PR

RAL 1021



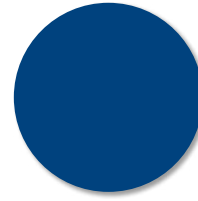
GS

RAL 3000



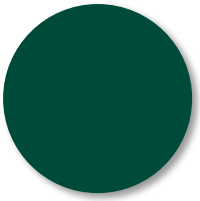
PR

RAL 3016



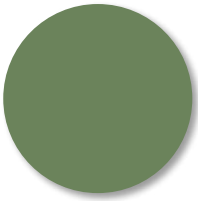
AR GS PR

RAL 5010



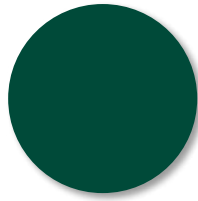
PR

RAL 6005



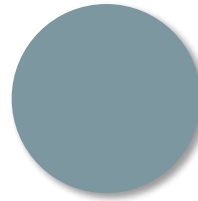
GS

RAL 6011



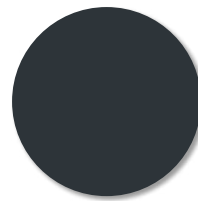
PR

RAL 6029



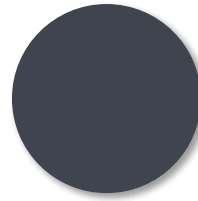
PR

RAL 7000



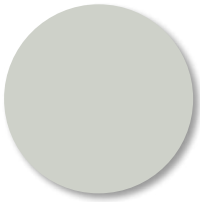
AR GS PR

RAL 7016



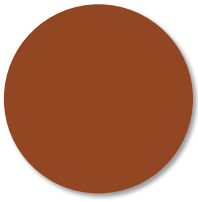
PR

RAL 7024



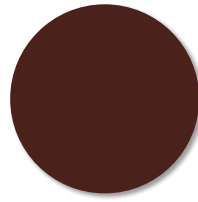
AR GS PR

RAL 7035



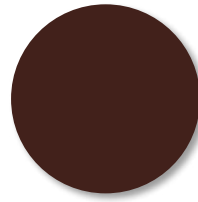
PR

RAL 8004



PR

RAL 8016



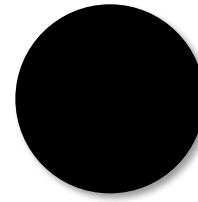
GS PR

RAL 8017



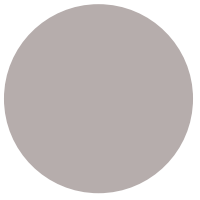
AR GS PR

RAL 9002



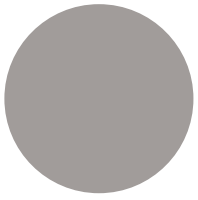
PR

RAL 9005



AR GS PR

RAL 9006



AR GS PR

RAL 9007



AR GS PR

RAL 9010

Beschikbare coating en kleuren per leverancier:

AR AR Panel **GS** Gór-Stal **PR** Pruszyński

Voor leveringsmogelijkheden **type Alpha / Beta / Delta**, voorraadniveaus, minimale bestelhoeveelheden, staaldikten, toepassingen en (meer)prijzen kunt u contact opnemen met Cladding Point.

Niet getoonde RAL kleuren op aanvraag.

De afgedrukte coatings en kleuren in deze kleurenkaart zijn zo nauwkeurig mogelijk weergegeven maar zijn slechts ter referentie. Wij adviseren u dan ook altijd een kleurenstaal aan te vragen zodat u de textuur en kleur beter kunt beoordelen.

Raadpleeg onze technische afdeling voor de overspanningsmogelijkheden. Met name bij de donkere kleuren (kleurgroep 3)!