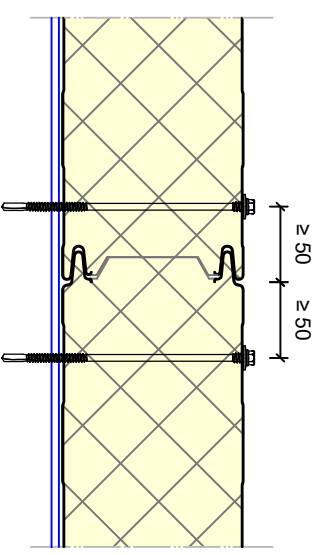
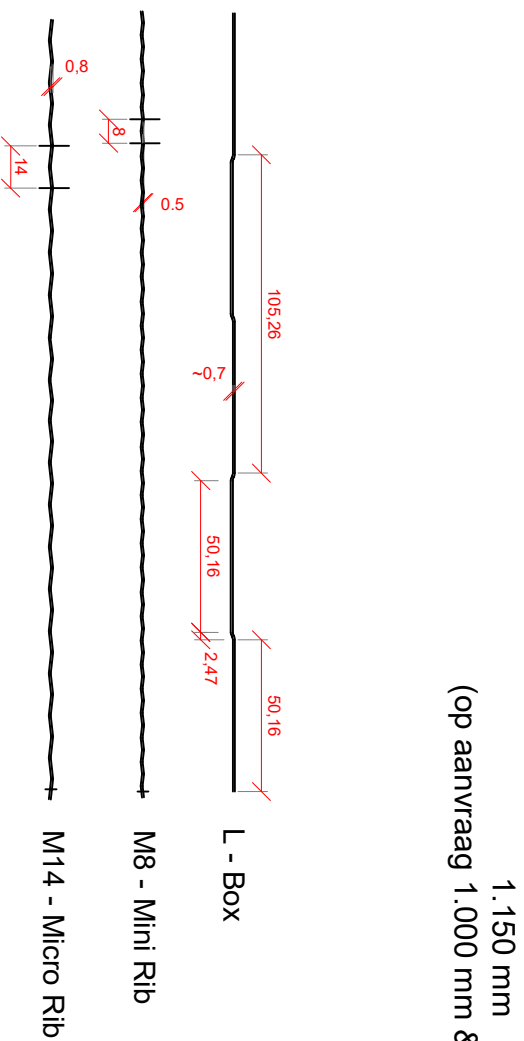
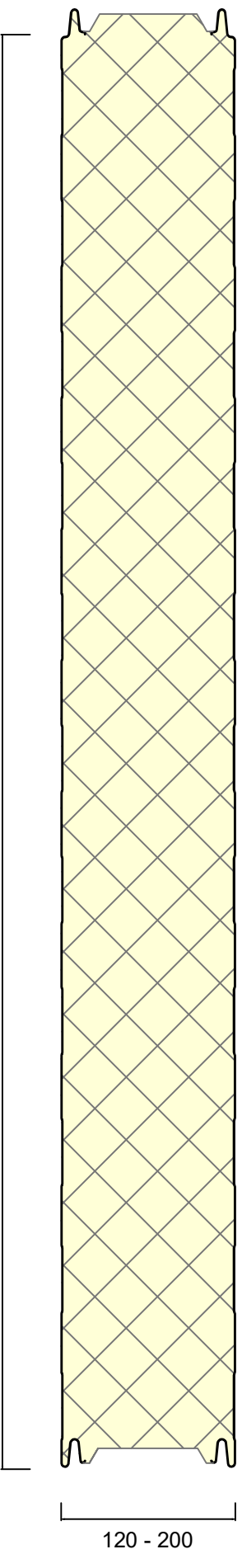


BUSINESS LINE BETA KV-AR



Business Line Sandwichpanelen <i>by Cladding Point</i>				
Cladding Point B.V. Handelsweg 12 6662 NH Elst (Gld.)	DATUM 23-Aug-21	TITEL Doorsnede Business Line Beta KV-AR		
GETEK P. Heijboorn	SCHAAL 1 : 5	FORMAAT A4	TEK.NR. DRS.BL.B.KV_AR	REV 0